

ANBIG

WEBINAR SERIES

JOURNEY TO ADVANCEMENT OF EARLY GI CANCER MANAGEMENT

JUL 2020 DEC

Registration



Follow us for more information



Email: secretariat@anbig.org

SESSION FORMAT
 60-minute lecture
 30-minute case discussion

PLATFORM
 Zoom



Philip Chiu
Hong Kong

Yasushi Sano
Japan

Kenshi Yao
Japan

Yutaka Saito
Japan

Yuichi Mori
Japan

Noriya Uedo
Japan

Shinji Tanaka
Japan

Hitomi Minami
Japan

Rajvinder Singh
Australia

Han-Mo Chiu
Taiwan

Enders Ng
Hong Kong

Yoji Takeuchi
Japan

Kenichi Goda
Japan

Ang Tiing Leong
Singapore

Jonard Tan Co
Philippines

Masashi Misawa
Japan

George Ho
Malaysia

Rupa Banerjee
India

Hon Chi Yip
Hong Kong

Shannon Chan
Hong Kong

Rapat Pittayanon
Thailand

Organizer



Supported by **OLYMPUS**

Endorsed by



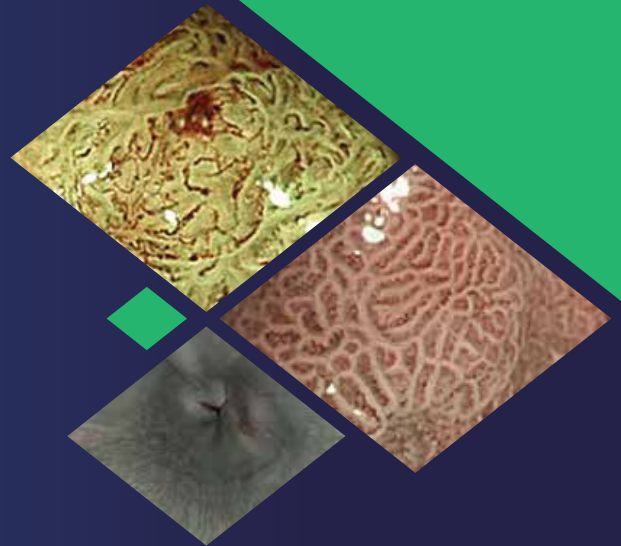
A - PSDE

ANBIIG

WEBINAR SERIES

JOURNEY TO ADVANCEMENT
OF EARLY GI CANCER
MANAGEMENT

JUL 2020 DEC



DIAGNOSIS SERIES → JUL to SEP 2020

DATE	TIME(GMT+8)	SESSION THEME	SPEAKER	MODERATOR
17 Jul (Fri)	16:00-17:30	1. NBI Diagnosis of Early Gastric Cancer	Noriya Uedo Kenshi Yao	Hon Chi Yip
24 Jul (Fri)	16:30-18:30	2. NBI Diagnosis of Barrett's Neoplasia	Rajvinder Singh Rupa Banerjee	George Ho
1 Aug (Sat)	14:00-15:30	3. NBI Diagnosis of Squamous Esophageal Neoplasia	Philip Chiu Kenichi Goda	Enders Ng
14 Aug (Fri)	16:00-17:30	4. NBI Diagnosis of Early Colorectal Neoplasia	Yasushi Sano Han-Mo Chiu	Ang Tiing Leong
28 Aug (Fri)	12:00-13:30	5. Classifications (Kudo/ NICE/ JNET) for Early Colorectal Neoplasia Explained	Yutaka Saito Yoji Takeuchi	Yasushi Sano
4 Sep (Fri)	17:30-19:00	6. NBI Diagnosis of Duodenal Neoplasia	Rajvinder Singh Rapat Pittayanon	Jonard Tan Co
11 Sep (Fri)	16:00-17:30	7. Endocytoscopy for Upper GI Neoplasia	Hitomi Minami Shannon Chan	Kenichi Goda
18 Sep (Fri)	16:00-17:30	8. Endocytoscopy and EndoBrain for Colorectal Neoplasia	Yuichi Mori Masashi Misawa	Shinji Tanaka

THERAPEUTIC SERIES → OCT to DEC 2020

More Details Coming Soon